



# Restaurant & Café Design

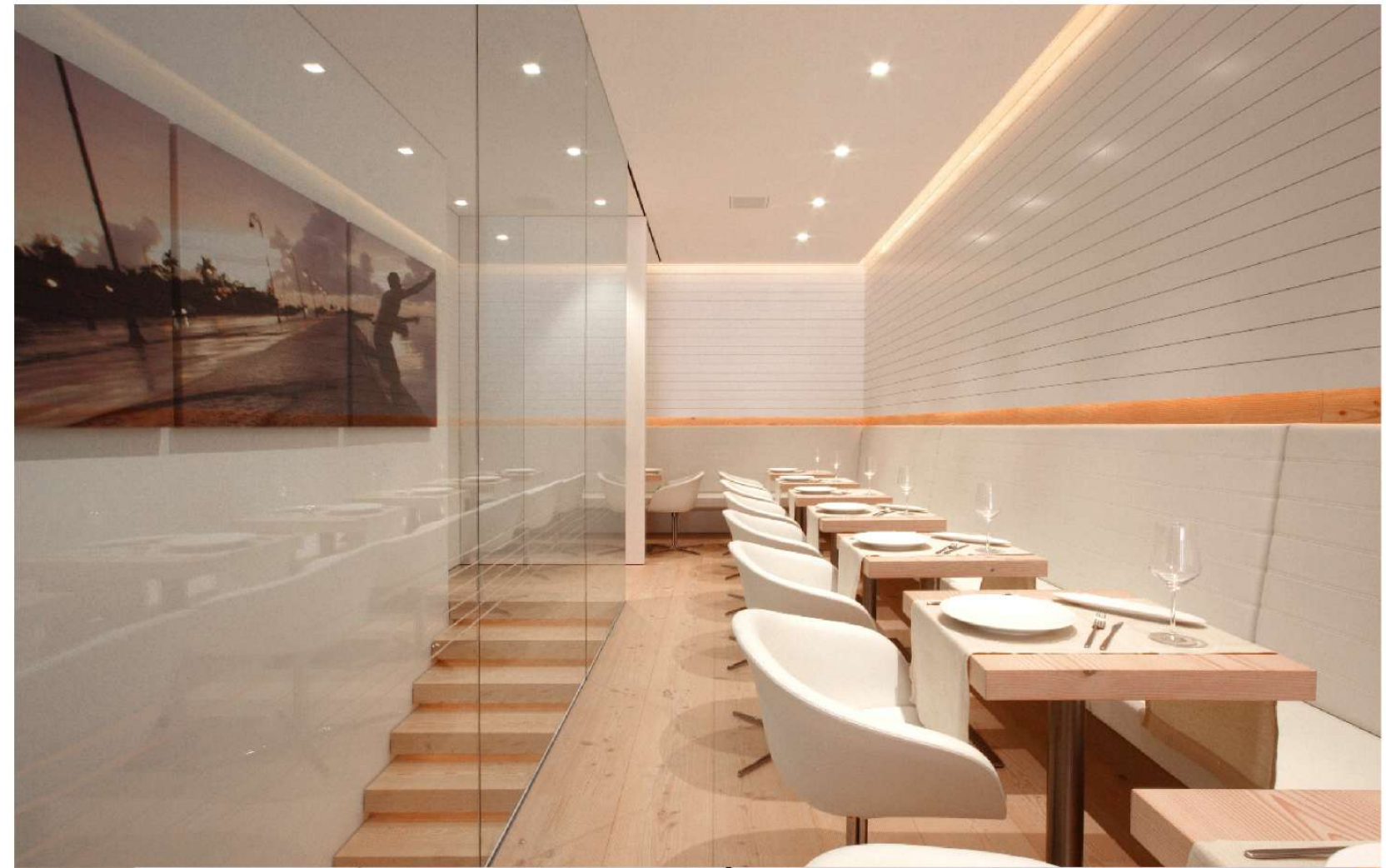
A Journey of Taste 创意餐厅设计

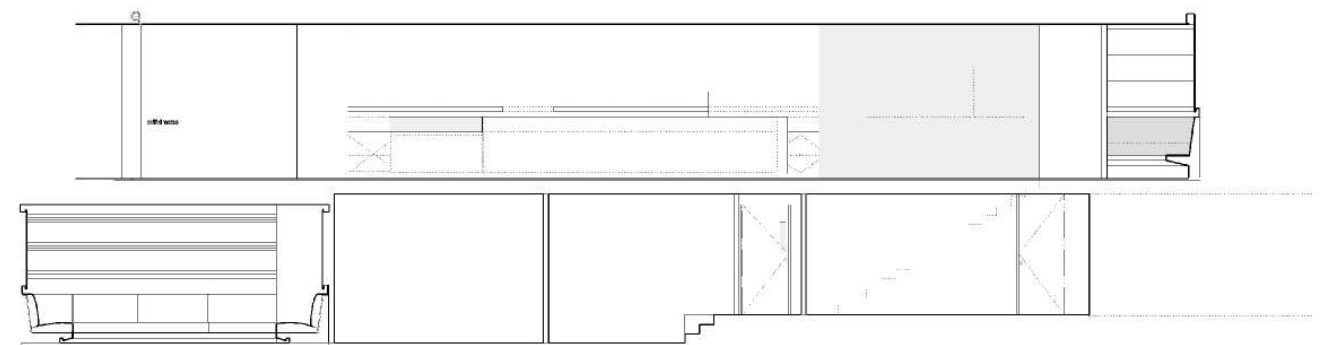
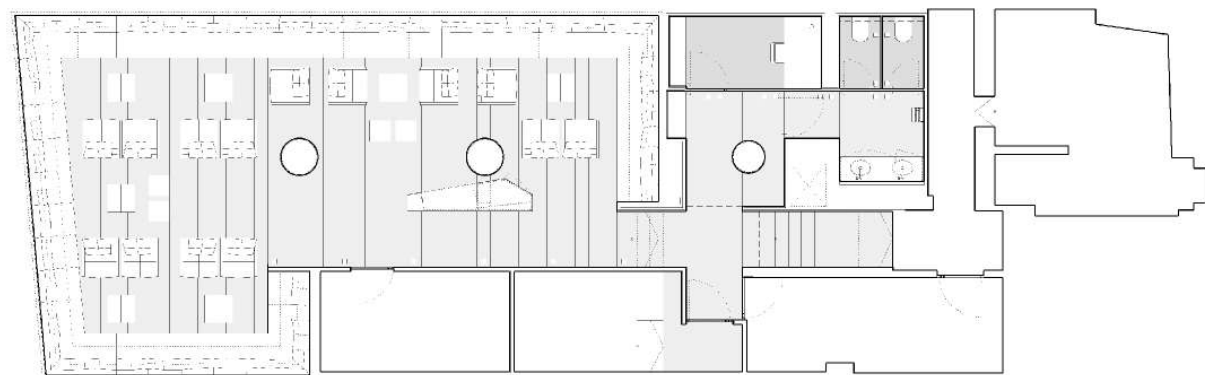
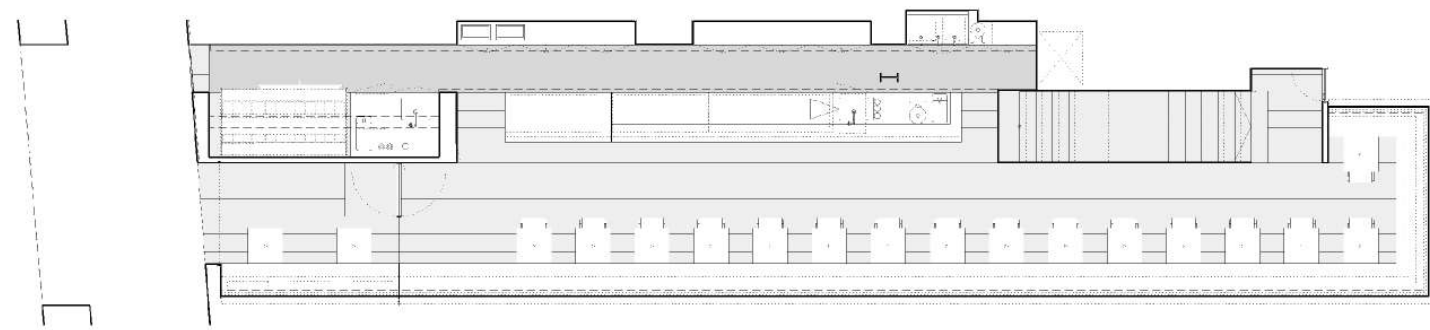
深圳市创格文化传媒有限公司 编

大连理工大学出版社

## Caffè di Mezzo

The line guide for the remodelling of the Caffè di Mezzo, located in Castelfranco Veneto near Treviso, is the idea of creating essential space, defined by a linear design, simple geometries and light effects, with the intent of conferring it a certain elegance and balance. The main feature of this bar is its twenty meter long rectangular shape. The project therefore emphasizes the longitudinal original shape creating an important sense of perspective. Another important feature of the space is the skylight, which opens into an inner courtyard of the building. This element plays a significant role in the architectural composition, giving great character to the bar service area below it. The new space is organized in two functional areas: the first, for service, is defined by a long linear counter, one meter-twenty high, clad in white corian and with a bottom light cove which grants it a sense of lightness in the space. The second area is the one reserved to the customers, and it's characterized by a bench upholstered in white leather which runs longitudinally and turns around the walls at the end to emphasize the continuity and wrap the space as much as possible. Aligned with the main counter is a white corian full height block, with also serves as a perimeter wall corresponding to the exterior private setback space for the bar customers, made possible by setting back the transparent glass enclosure. The longitudinal direction is reinforced by the use of the wood flooring laid in the same direction and by lacquered wood planks cladding the wall above the bench. To give maximum strength to the perspective, linear light coves are located in the dropped ceilings and immediately above the bench's backrest.







Caffè di Mezzo 位于Treviso 附近的Castelfranco Veneto, 翻新的原则是实实在在地利用空间, 也就是充分利用直线, 达到简约明亮, 和谐优雅的效果。咖啡馆最主要的特点是它看上去就是一个20米长的矩形。因此, 设计要充分利用其外貌特征, 拓宽视野。它的另一特别之处在于一扇朝着大楼天井的天窗, 天窗对于该建筑布局意义非凡, 这使得咖啡馆服务区特色鲜明。新空间有两大功能区: 一个是服务区, 长形柜台高1.20米, 通体白色的corian, 底部有一个浅浅的水湾, 显得

空间轻盈淡雅。第二个功能区是顾客专用区, 这里的白皮软垫长沙发别具一格。沙发沿墙摆放, 一直弯向空间深处, 使得空间看上去浑然一体。正对着大台相对的是一块通顶的白色corian, 一面环形影壁, 影壁后面环绕透明玻璃, 使它也成为咖啡馆服务区的间壁外墙。同向铺设的实木地板长沙发上缘起上漆木板墙围加剧了咖啡馆的纵长感。为了加强视觉的延长感, 在天棚垂脚和沙发靠背间装饰着长长的浅色凹圆。

