



JM Architecture
Caffè di Mezzo

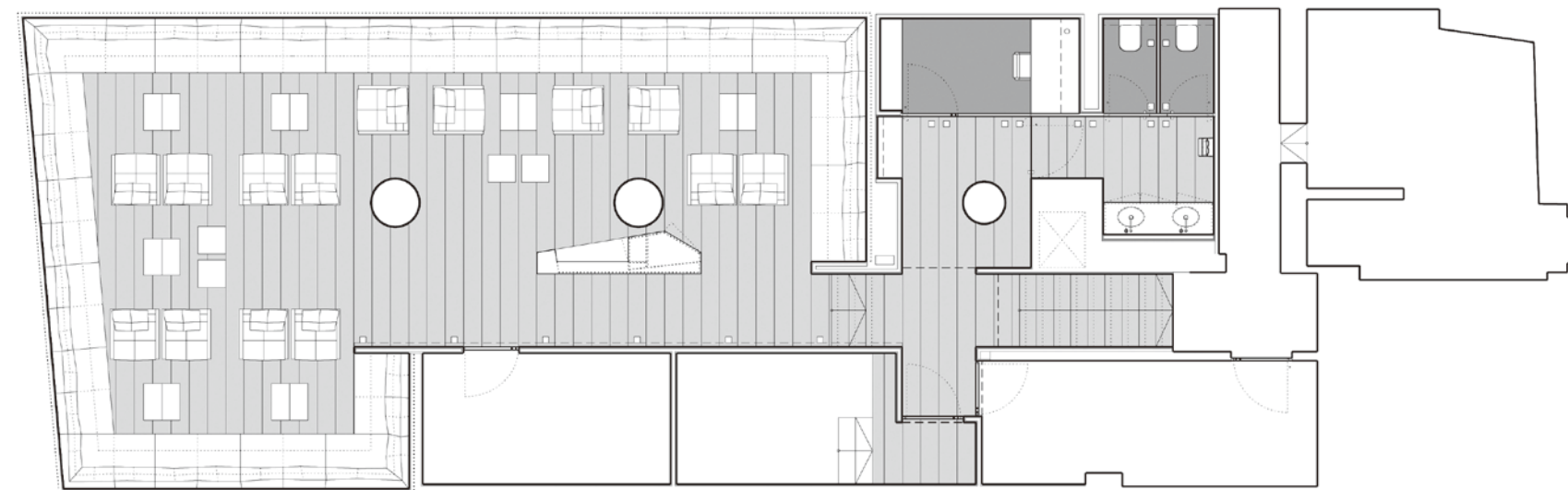
Area: 250 sqm
Photography: Jacopo Mascheroni
Location: Castelfranco Veneto, Italy
Dining

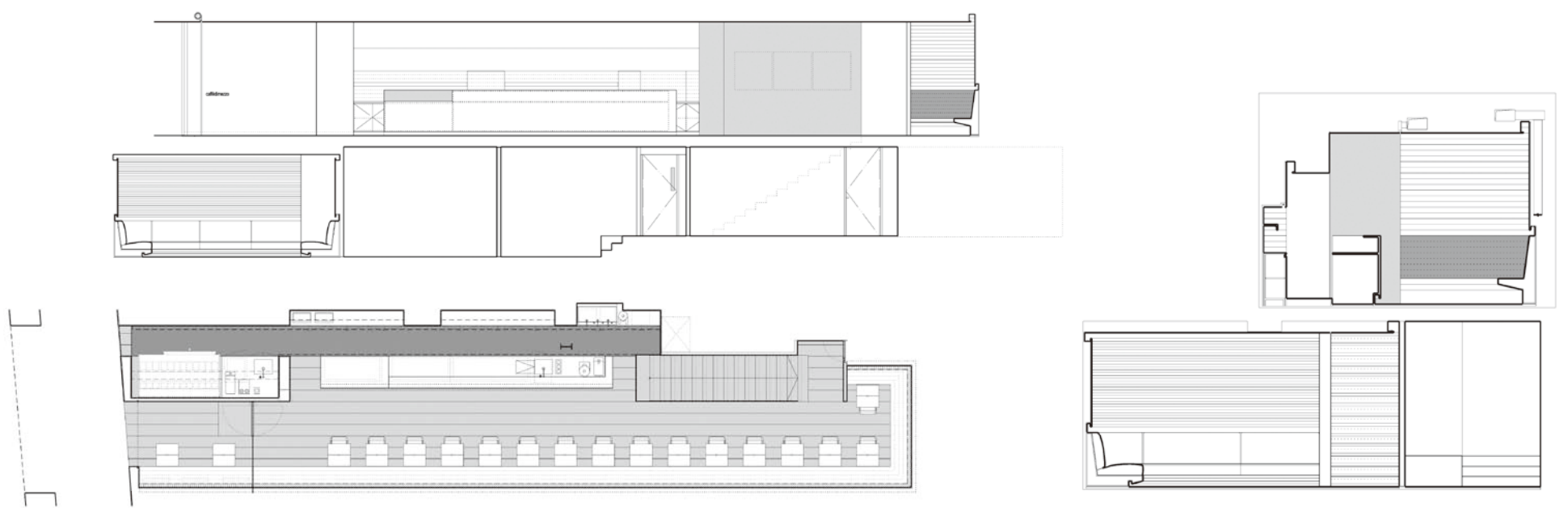
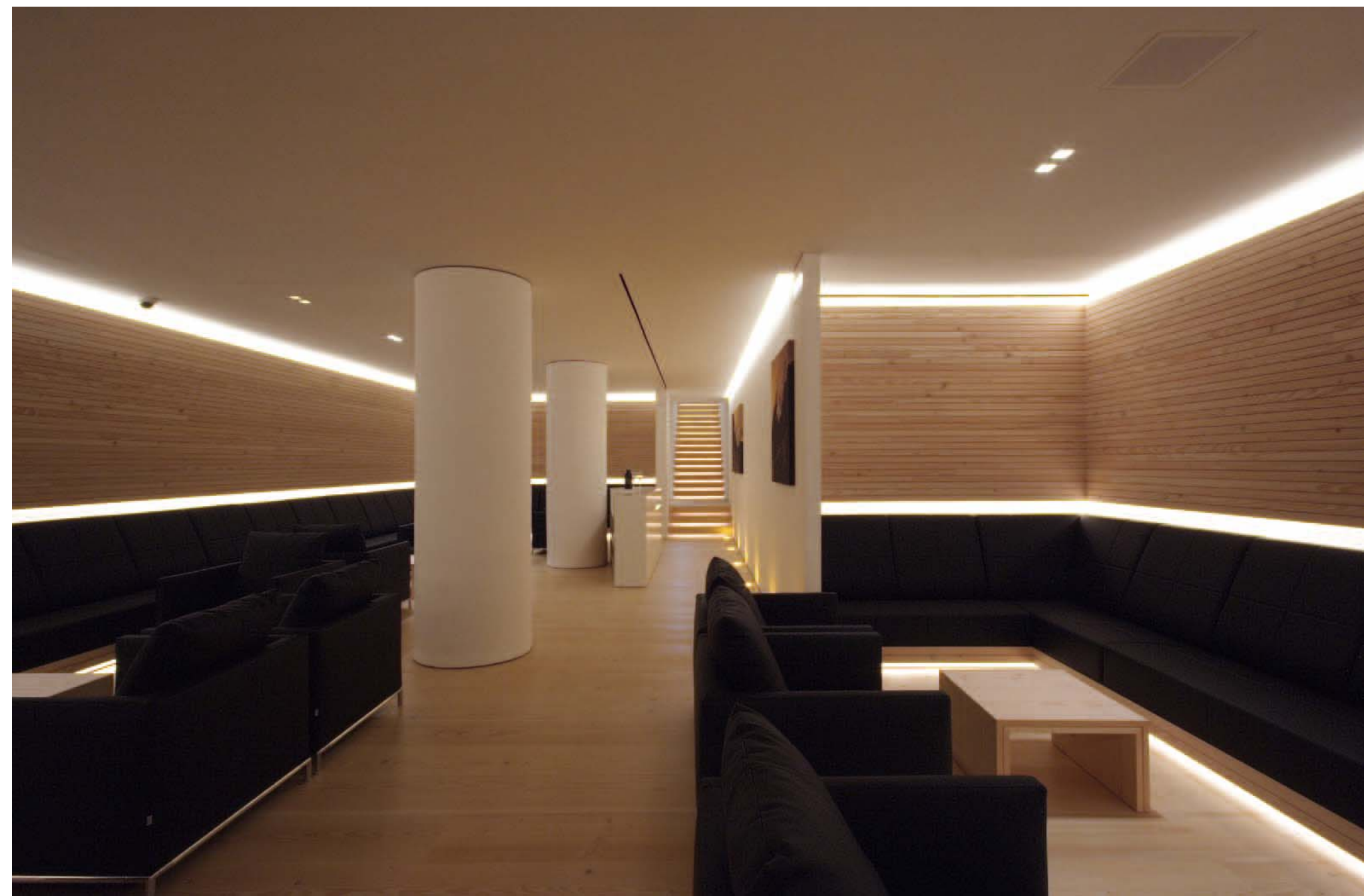
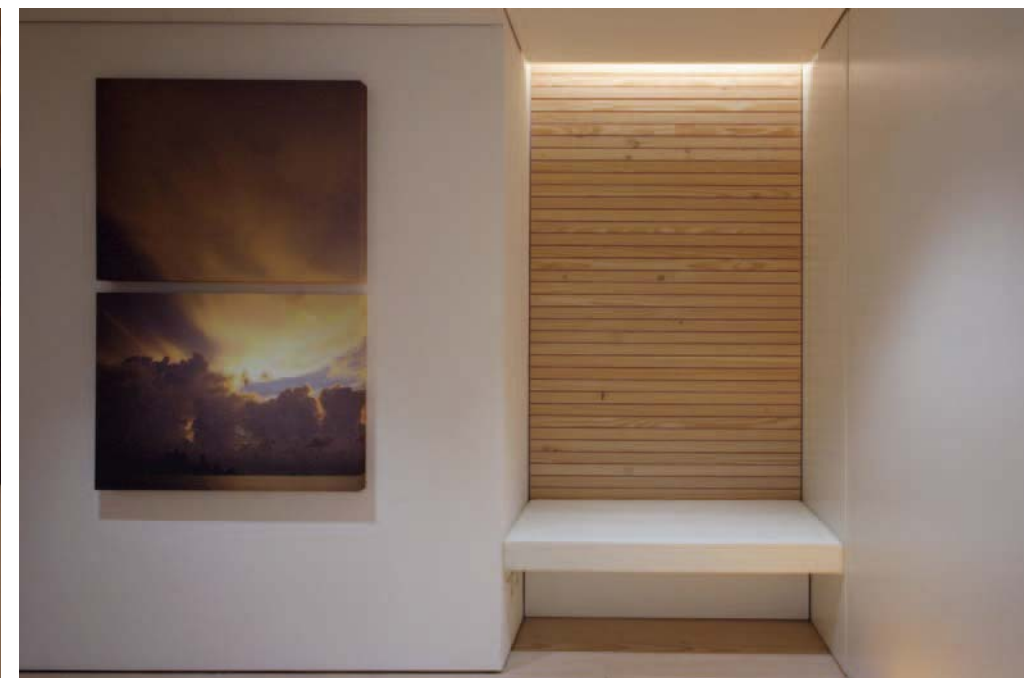
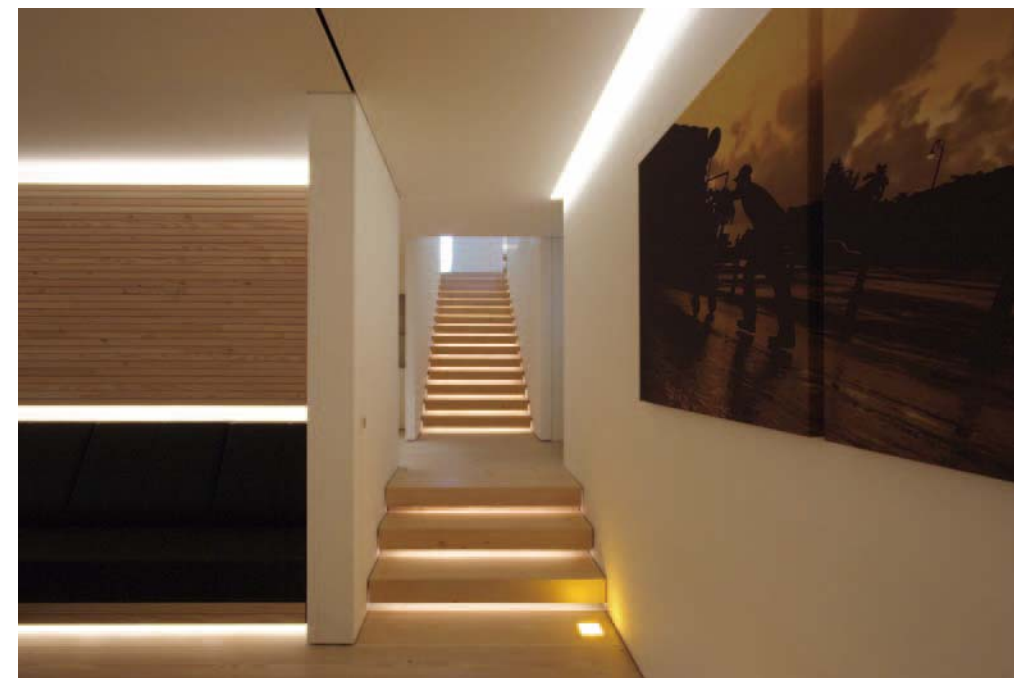
The line guide for the remodelling of the Caffè di Mezzo is the idea of creating essential space, defined by a linear design, simple geometries and light effects, with the intent of conferring it a certain elegance and balance.

The main feature of this bar is its twenty meter long rectangular shape. The project therefore emphasizes the longitudinal original shape creating an important sense of perspective. Another important feature of the space is the skylight, which opens into an inner courtyard of the building. This element plays a significant role in the architectural composition, giving great character to the bar service area below it.

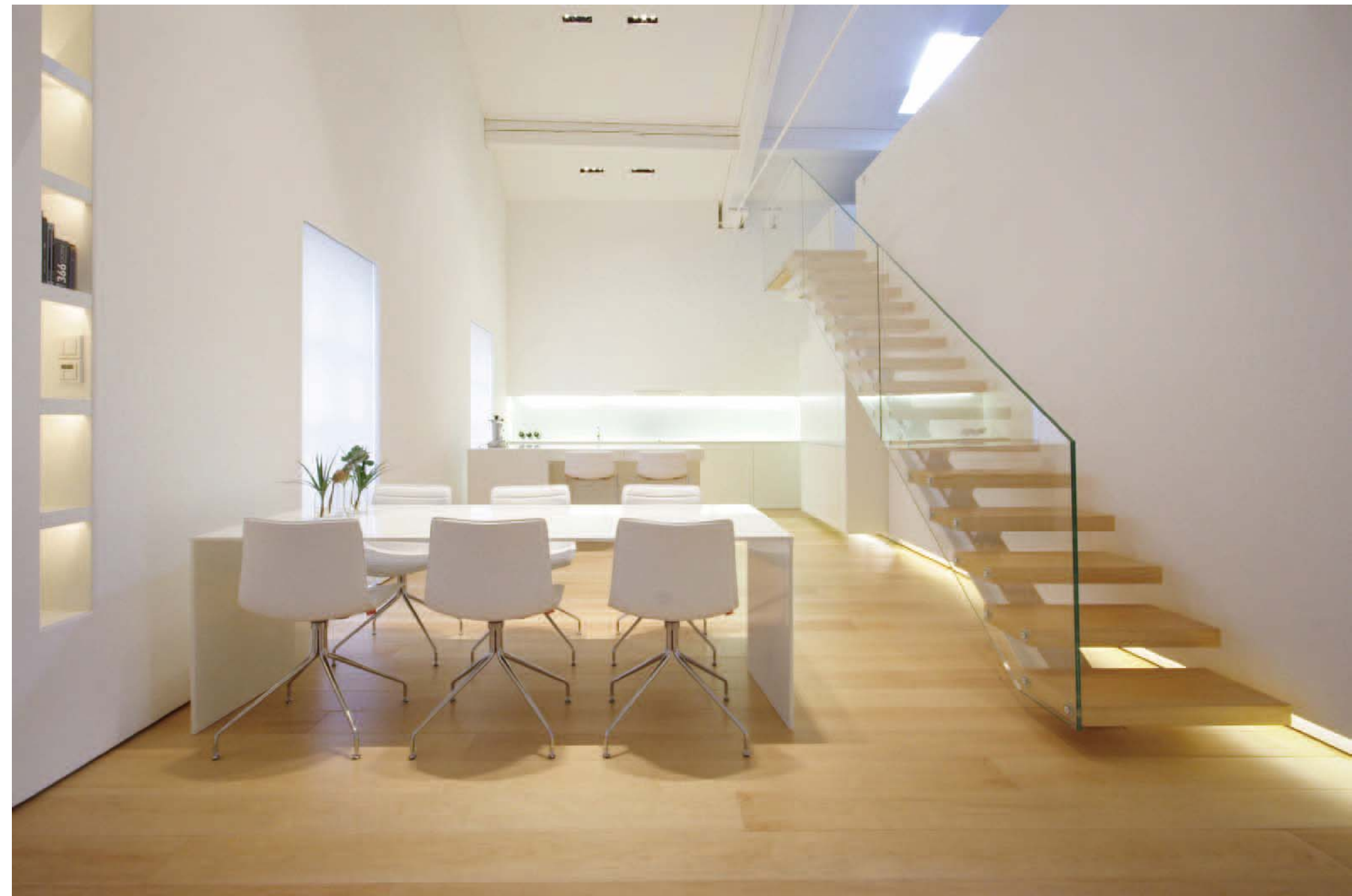
The new space is organized in two functional areas: the first, for service, is defined by a long linear counter, one meter-twenty high, clad in white corian and with a bottom light cove which grants it a sense of lightness

in the space. The second area is the one reserved to the customers, and it's characterized by a bench upholstered in white leather which runs longitudinally and turns around the walls at the end to emphasize the continuity and wrap the space as much as possible. Aligned with the main counter is a white corian full height block, which also serves as a perimeter wall corresponding to the exterior private setback space for the bar customers, made possible by setting back the transparent glass enclosure. The longitudinal direction is reinforced by the use of the wood flooring laid in the same direction and by lacquered wood planks cladding the wall above the bench. To give maximum strength to the perspective, linear light coves are located in the dropped ceilings and immediately above the bench's backrest.









JM Architecture Como Loft

Area: 150 sqm

Photography: Jacopo Mascheroni

Location: Como, Italy
Residential

When an old monastery located around the city of Como, Italy, was being remodelled and converted into a residential complex, two adjacent units have been connected to form this duplex apartment. The shape of the original units is clearly enhanced by the different pitched ceiling direction as well as by their different heights. The main idea was to keep the shell intact, maintaining the entire length of the unit open and invading the space minimally. The result is the insertion of an enclosed box on one side containing a small bedroom and two bathrooms, which leaves to an open space the main functions of the home.

The main entry is a very small foyer which creates a sense of compression before entering the main gallery, where the living spaces, kitchen, dining and living, are separated from the master bedroom by a lacquered block. In the drop between the two different ceilings, a video projector is inserted

to play images on the wall above the kitchen. To allow the maximum projection surface, the upper kitchen cabinets are hidden behind the wall and slide down with a motorized system. The other characteristic element in the main space is the staircase, which is an assembled steel beam with open treads made by a cantilever steel plate covered in wood. Canadian maple has been carefully selected for the hardwood floors, and since maple wood isn't stable with radiant floor heating, the floor planks were custom built with 2.5mm Canadian maple top and back layers on a particle board. The 20cm width of the floor planks modulate the position of all the elements, from the walls to the millwork. The floor planks also runs up the master suite wall, which is lit by an upper light cove.

